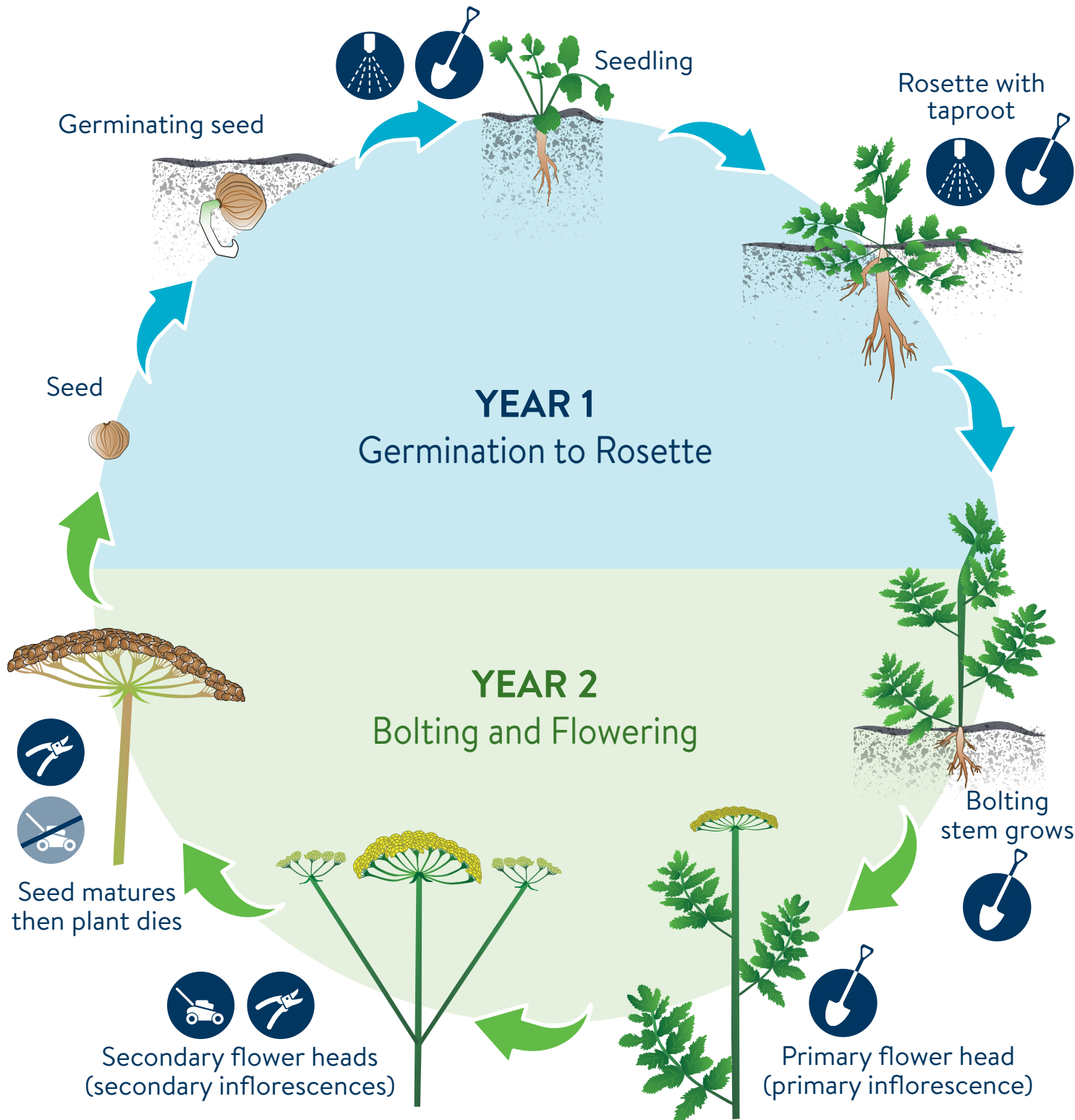


WILD PARSNIP

Pastinaca sativa
Lifecycle and Treatment Timing



TREATMENT

Wear protective clothing including gloves and eyewear when in contact with wild parsnip.



HERBICIDE APPLICATION
Spray rosettes.



DIG ROOT
Dig out root at least two inches below ground during seedling, rosette, bolting and primary flower head stage.



MOW
Mow during the secondary flower head stage before seed develops.



CUT SEEDHEADS
Remove seedheads during secondary flower head stage and on mature plants.

Mowing road right of ways for specific noxious weed infested areas to prevent the ripening or scattering of seed or other plant propagating parts before August 1st is a legal exception to bird nesting and wildlife habitat protection along roadsides (Minnesota Statutes 160.23).

MINNESOTA Minnesota Department of Agriculture
MINNESOTA Minnesota Department of Natural Resources

UNIVERSITY OF MINNESOTA
EXTENSION

