

Follow BMPs to Keep Acetochlor out of the Silver Creek & Protect its Future use

- Acetochlor herbicide (found in products like Tripleflex, SureStart, Warrant, and Harness) has been found in Silver Creek in Carver County at levels above Minnesota's chronic water quality standard of 3.6 parts per billion. As a result, the Environmental Protection Agency listed Silver Creek as impaired (contaminated) for acetochlor. See figures 1 and 2 for the location, boundaries, and field reference numbers of the Silver Creek Watershed.
- High levels of acetochlor in Silver Creek can harm aquatic organisms, including plants.
- High acetochlor levels in Silver Creek, typically observed from early May to early June, occur at the same time as early-season applications and subsequent rain events that cause surface runoff.
- The Minnesota Department of Agriculture (MDA) suggests following best management practices (BMPs) to keep acetochlor out of Silver Creek. Failure to reduce acetochlor levels in the Silver Creek may lead to restrictions on its use in the area.

Silver Creek Watershed 25,344 Acres

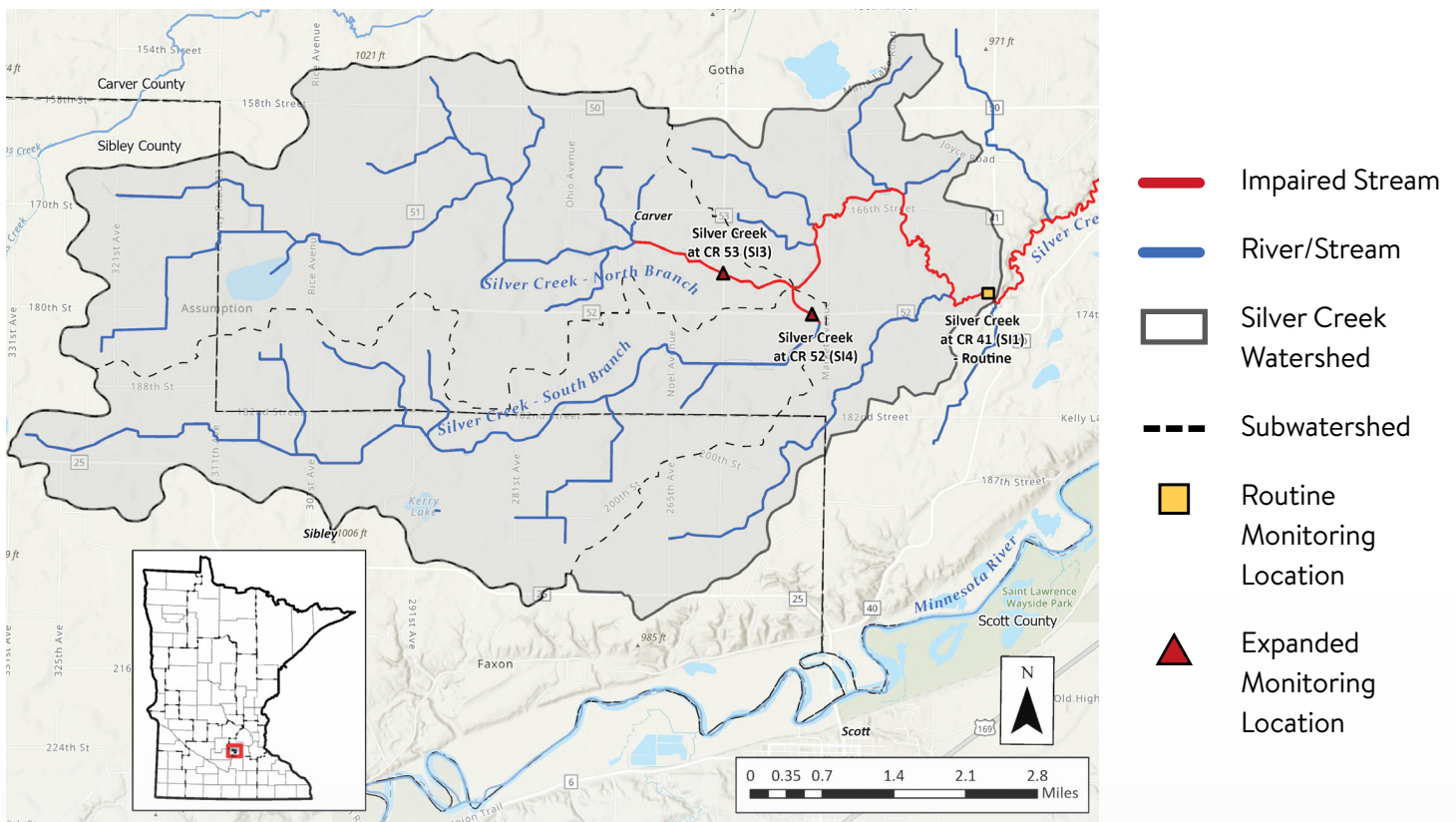


Figure 1. A map of Silver Creek watershed showing its location and boundaries

Silver Creek Watershed 25,344 Acres

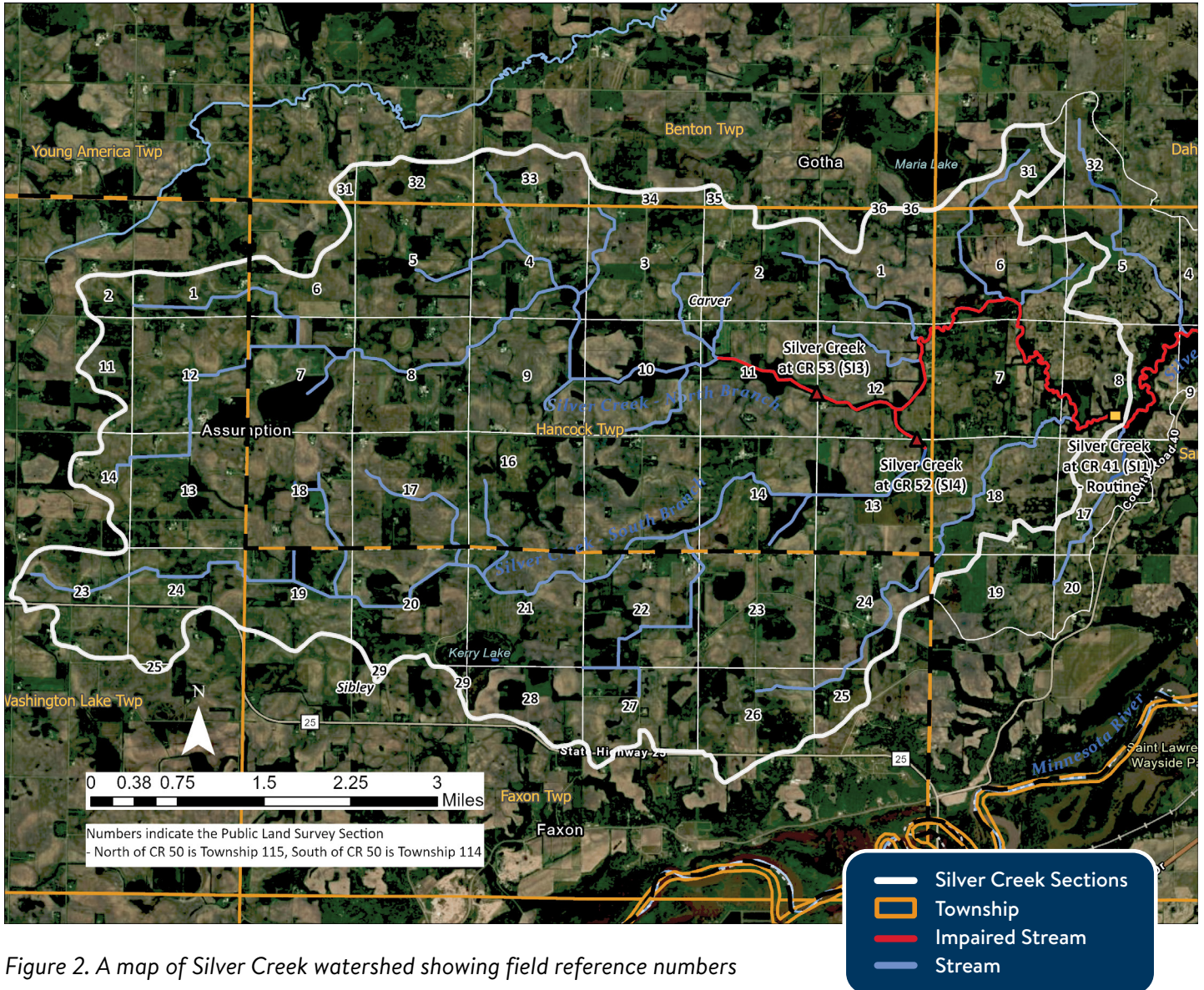


Figure 2. A map of Silver Creek watershed showing field reference numbers

Scan to see the MDA's
acetochlor BMPs.



For more information, contact the
Minnesota Department of Agriculture
at ptu.mda@state.mn.us.