

Field Walkover Process

Root River Field to Stream Partnership

1. 2010-2015

Strong relationships are key

Baseline monitoring and farmer surveys were conducted. Time was taken to meet with producers, understand their operations and gather input about the best approach for field walkovers.

Four farmers, SWCD, and MAWRC Partners participated in a local advisory team

2. June-2014

Evaluated fields with precision conservation planning tools. Created maps to help guide the walkovers.

3. January-2015

Local SWCD hired experienced & devoted conservation technician.

4. Letters

Farm leaders and trusted crop advisor sent letters to neighbors, encouraging participation.

5. March-2015

Walkover process tested with farm leaders and improved.

March-May:

52 walkovers completed
(583 fields, 8,412 acres)

6. Thank you

County Commissioners mailed each participant a thank you letter.

7. August-2015

Simplified walkover reports mailed to participants along with individual action plan.

9. Spring-2016

Targeted practice installation begins

8. Technician completed a follow-up site-visit to discuss report and how to move forward. Letter of intent signed.



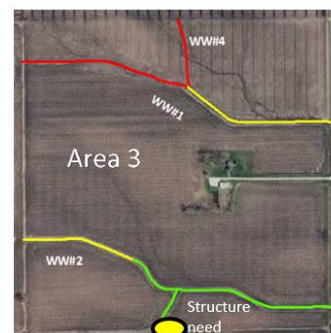
Photo: Paula Mohr, The Farmer

Farmer Leaders



Ron Meiners-field walkover technician

Low Risk Moderate High Risk



Simple map report

10. Results

- 100% farmer participation (47/47 farmers), representing 92% of the watershed crop acres.
- 85% of farmers signed letters of intent to install priority practices.
- \$45,000 walkover investment produced over \$1.8 million in conservation cost-share assistance.
- Over 70% of the farmers addressed their priority sites in three years. Some farmers installed without cost-share.

Root River Field to Stream Partnership

Contact: Kevin Kuehner 507-765-4530



Minnesota Department of Agriculture
Minnesota Agricultural Water Resource Center
The Nature Conservancy

Mower SWCD
Fillmore SWCD
Root River SWCD