

Arrest the Pest Hotline: Metro 651-201-MOTH, Greater Minnesota 1-888-545-MOTH

## Gypsy Moth in Minnesota - Background

### INVASIVE SPECIES

Gypsy moth is native to Europe and Asia and was accidentally introduced to North America (Massachusetts) in 1869 by an amateur entomologist. It is now a forest pest from maritime Canada south to North Carolina and west to Wisconsin.

In order to contain the populations, generally infested areas are quarantined by the federal government. Updated maps are available at [www.mda.state.mn.us/gypsy\\_moth](http://www.mda.state.mn.us/gypsy_moth).

### LIFE CYCLE

Eggs hatch in late spring and caterpillars feed for 5-6 weeks

In mid to late summer they stop feeding and pupate within a leathery shell in a sheltered spot.

Adult moths emerge from pupae, mate, lay hundreds of eggs in a single mass, and die.

Egg masses over-winter protected in a fuzzy, tan blanket of hair from the female's body.

### RAPID SPREAD

Each female lays one egg mass containing between 500-1000 eggs. These masses are laid on just about anything and are often deposited on objects that humans carry to uninfested areas.

Larvae are light enough to blow away on a breeze and can land ½ mile away.

Gypsy moths in any life stage have few natural enemies that impact their populations.



### COSTS

Homeowners must pay for removal and replacement of trees weakened or killed by gypsy moth. Property values may decline from tree loss.

Allergic reactions may develop from shed skins or droppings from caterpillars.

Hordes of caterpillars crawling over trees and structures are a nuisance that could lead to environmental damage and lost tourism dollars.

Extra expenses of inspections, regulations and treatments for nurseries, Christmas tree growers, timbering and paper companies add up.

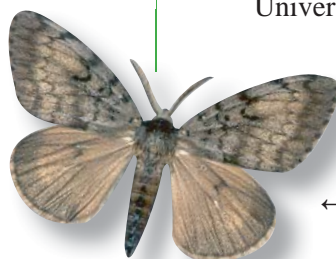
### DAMAGE

Caterpillars feed on the leaves of 300 species of trees and shrubs, favoring oak, aspen, and birch. Defoliation leaves trees vulnerable to disease, pests, and environmental stress. Over 1.4 million acres of trees were stripped bare in 2007.

### COOPERATIVE GYPSY MOTH PROGRAM

Partner agencies strive to delay the establishment of gypsy moth in Minnesota through early detection and eradication for as long as is economically and ecologically feasible.

Minnesota Department of Agriculture  
Minnesota Department of Natural Resources  
USDA Animal and Plant Health Inspection Service  
USDA Forest Service  
University of Minnesota



← MALE

FEMALE →

