

Chance

Chance

Chance

Chance

Chance

Chance

Chance

Chance

Chance

Chance

Chance

Chance

Chance

Chance

Chance

Chance

Chance

Chance

Chance

Chance

Chance

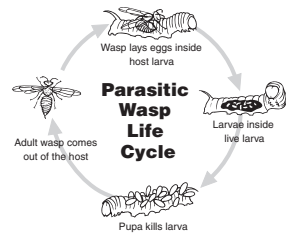
Which can be considered pests?

- bacteria or viruses that make you sick
- squirrels that move into your attic
- purple loosestrife
- plants growing in sidewalk cracks

Which one is NOT a "good guy" predator?

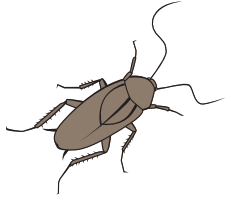
- butterflies
- bumble bees
- daddy longlegs
- ticks

Parasitic wasps kill bad bugs at Camp Snoopy.
Describe the parasitic wasp life cycle.



Pest or Guest?

Defend Your Answer



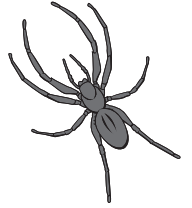
Pest or Guest?

Defend Your Answer



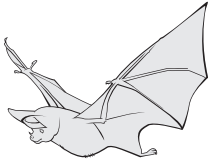
Pest or Guest?

Defend Your Answer



Pest or Guest?

Defend Your Answer



Pest or Guest?

Defend Your Answer



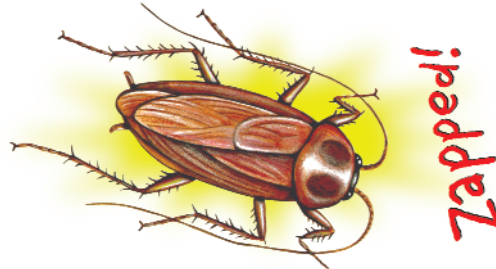
Pest or Guest?

Defend Your Answer



Pest or Guest?

Defend Your Answer



Pest or Guest?

Defend Your Answer



Pest or Guest?

Defend Your Answer



Pest or Guest?

Defend Your Answer



How do aphids harm plants?

How do you know if a plant has aphids?

Name an example of biological control, or using the food chain to control pests.

Milkweed is bad for cornfields but good for monarch butterflies.

Tell why.

An adult ladybug can eat 50 aphids a day.

How many would you release in a garden where you estimate 2000 aphids?

Name a beneficial insect. Tell how it helps people.

With IPM, when would you choose to use pesticides?

Chance

Chance

Chance

Chance

Chance

Chance

Chance

Chance

Chance

Chance

Chance

Chance

Chance

Chance

Chance

Chance

Chance

Chance

Chance

Chance

Chance

Which is not poison?

- Athlete's foot powder for fungus disease
- Ivory soap
- Tub and shower spray for mold and mildew

Name one sign that you might be sick from a tick bite.

Why are some plants considered weeds even though they are pretty?

Bats are small and beneficial. Why are people afraid of them?

Pests sometimes like to live with people because they find _____, _____, and _____.

A ladybug larva eats 150 aphids a day. How many could it eat in a week?

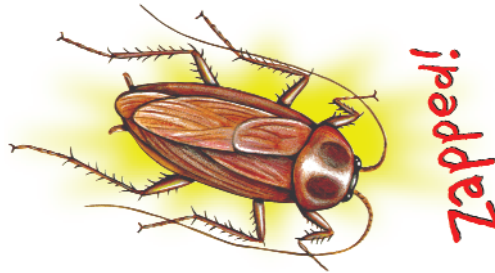
A ladybug larva eats 150 aphids a day. An adult ladybug can eat 50 aphids a day. A larva can eat _____ more aphids per day than an adult.

In what ways are bees important to humans?

What insect can give heartworm disease to dogs or cats? How can you protect your pet from this disease?

A word that means "poisonous in certain amounts" is:

- toxic
- nontoxic



Which does NOT eat aphids?

- lacewings
- assassin bugs
- wasps
- squirrels
- spiders
- chickadees

(Don't know? See Glossary in Pest Patrol book.)

(Don't know? See page 16 in Pest Patrol book.)

Bats are great mosquito eaters.

Name and explain the way bats navigate and find food.

(Don't know? See page 15 in Pest Patrol book.)

How do roaches mark the spots where they find food?

(Don't know? See page 12 in Pest Patrol book.)

Which critters will gobble up roaches?

- frogs
- lizards
- birds
- mice
- all of these

(Don't know? See page 12 in Pest Patrol book.)

The very best way to remove a tick that attaches to you is:

- Pull it off with a tweezers.
- Touch the tick with a match.

(Don't know? See page 13 in Pest Patrol book.)

Where do mosquitoes lay their eggs? How can you prevent mosquitoes from growing in your yard?

(Don't know? See page 14 in Pest Patrol book.)

Cracks and holes in the walls are great places for pests to hide and travel from here to there. How can you stop that problem?

Which is an example of biological control?

- Farmers keep barn cats to control mice.
- Farmers pay a pest control company to poison barn mice.

True or false?

Using chemicals without reading the instructions can make kids and pets sick. It also can harm the outdoors and animals living there.

Tell how you think they feel about dandelions:

- homeowner
- bees
- ecologist
- chemical lawn care company